

**Addendum to H-58-10-AMAM-07**  
**Hydraulic Pump**



Figure 1: Example Old Style Pump (left)  
New Style Pump (Right)



NOTE:  
Prior to installation, install  
Plug, PN AN 814-4D and  
Packing MS 28778-4

Figure 2 Location of Seal, Plug,  
Shipping Plug shown.

**Addendum to H-58-10-AMAM-07**  
**Hydraulic Pump**

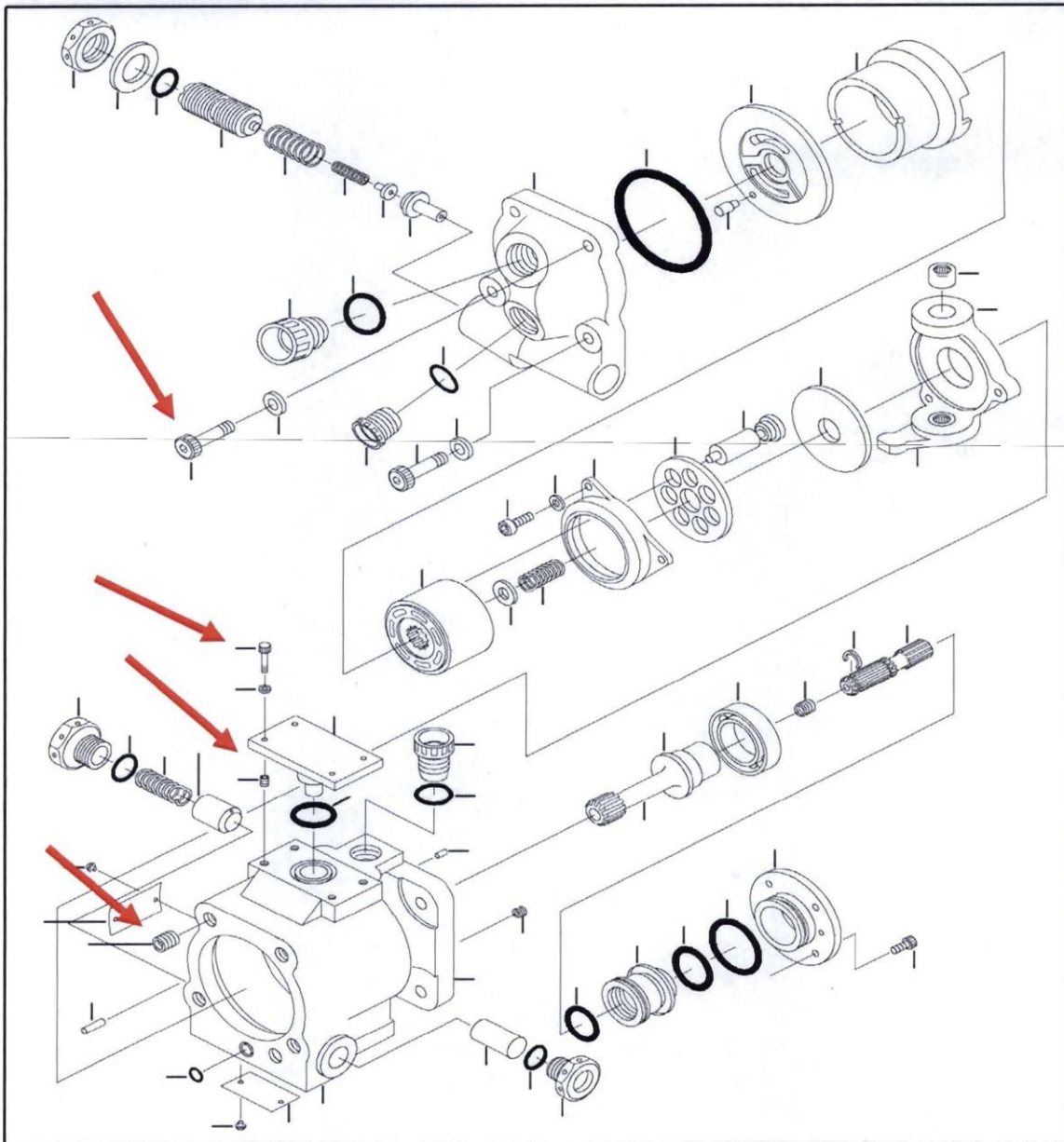


Figure 3: Parts affected by Rev F to Drawing 65016-03