

**Supplement to H-58-MIM-14-005  
Lower Support Packing Replacement**

**6-72.1. Replacement — Lower Support Assembly Packing. (AVIM)**

- a. Transmission removed. Refer to paragraph 6-71

**NOTE**

**Use plastic or acrylic tools to remove  
sealant, do not use metal.**

- b. Remove sealant around retaining ring (21, Figure 6-10) and support assembly (24).  
c. Remove retaining ring (21) from groove in bottom of transmission case (12).

**WARNING**

**Critical Safety Item (CSI)**

**No damage is allowed to support assembly.  
If damage is found, the transmission shall  
be reassembled and turned in for depot  
level repair.**

- d. Attach slide puller to support assembly (24) with two 1/4-28 bolts. Remove support assembly (24) from case (12). Damaged inserts (23), Part Number MS124736, may be removed and replaced with the identical type of insert if the following conditions apply.

(1) Tapped holes must still be in accordance with dimensions/specifications.  
Reference TM 1-1500-204-23-6.

(2) Tapped holes shall show no evidence of damage, (i.e. corrosion, etching, or major pitting).

- e. Remove packing (25) from outer edge of support assembly (24).  
f. Install new packing (25) in groove in outer edge of support assembly (24).  
g. Lubricate packing lightly with lubricant (C103).  
h. If removed, position key (22) in key slot in support assembly (24). Make grease pencil mark on support and on case to indicate center of key. Loose keys will be bonded into position with sealing compound (C129.1)  
i. Push support assembly (24) into lower part of transmission case (12); line up key (22) with key slot in transmission case and duplex outer bearing nut.

**Supplement to H-58-MIM-14-005**  
**Lower Support Packing Replacement**

**j.** Install retaining ring (21) in groove in bottom of transmission case next to support assembly (24).

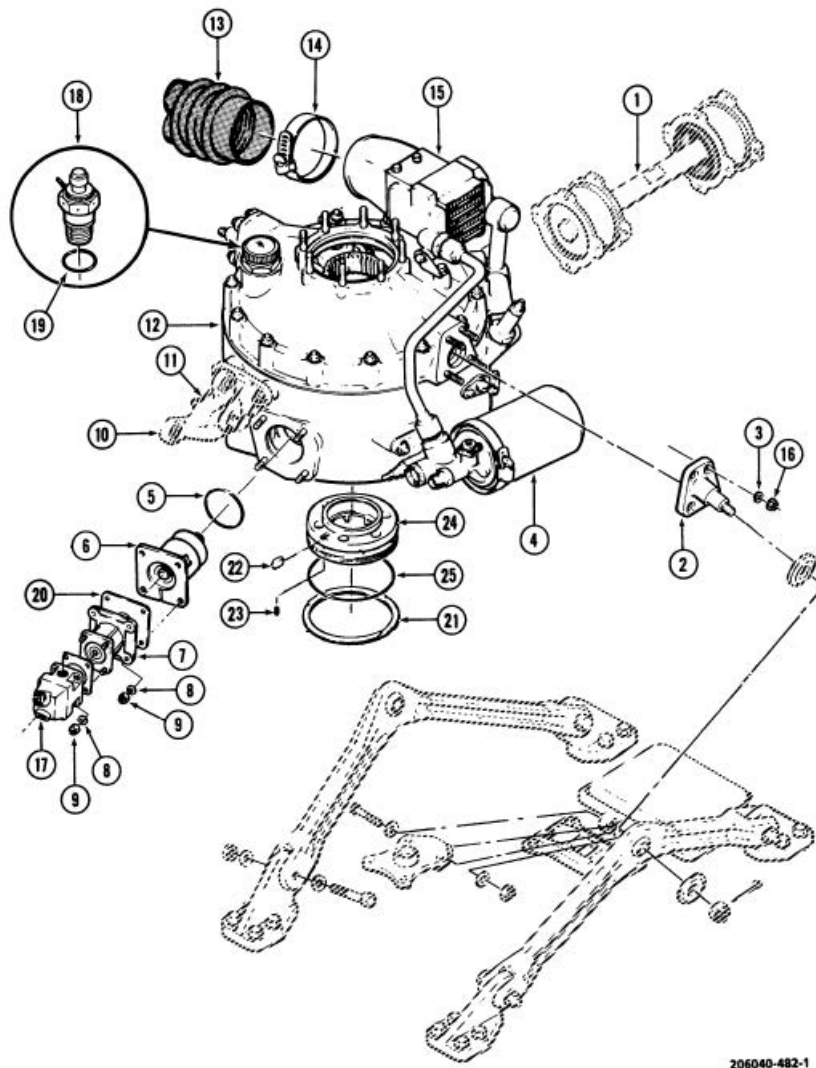
**k.** Apply sealant (C131) to the outer edge of support assembly (24) and retaining ring (21).

**TM 55-1520-228-23-1, page 1-20**

129.1 Sealing/Locking Compound    08631 (05972)    8030-00-935-7100

Supplement to H-58-MIM-14-005  
Lower Support Packing Replacement

TM 55-1520-228-23-1



206040-482-1

Figure 6-10. Main Transmission (Sheet 1 of 2)

6-43